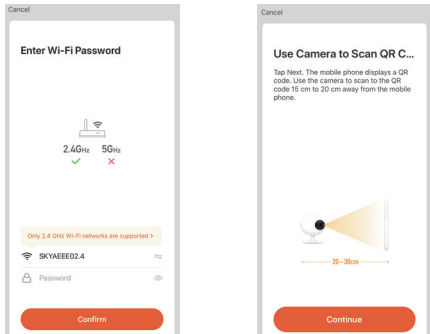
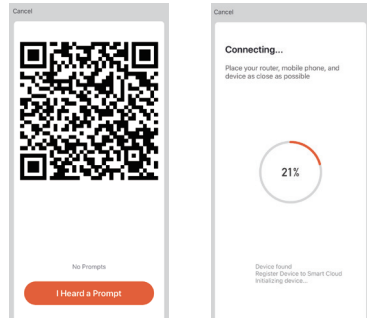


Step 3 Your device WiFi network will be the default network displayed. Simply add your WiFi password or choose another network. Click confirm and then continue and scan the QR code with your new device.

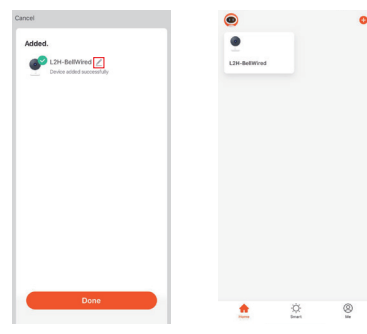


7

Step 4 When you hear a beep . Click "I Heard a Prompt". The set up should take around 30 seconds.



Step 5 The device is added, and the device nickname can also be changed in this interface.



8

## FAQ

Q: The Device is unresponsive and I cant see a picture?

A: Check the network connectivity on the device (solid blue light) and your router is on and in a signal area. If not reset your device and add it again.

Q: Why is it still in the list of devices after resetting?

A: The reset device only resets the network configuration of the camera, but cannot change the configuration on the App, remove the camera from the App by clicking on the device and device option and then 'Remove Device'.

Q: How can I change the network to a new router?

A: First remove and reset the device on the App and then configure the device again by the App.

Q: Why doesn't the device recognise the Micro SD card?

A: It is recommended that the Micro SD card is inserted when the power is off. Confirm the card is the right way around and is format to FAT32.

Q: Why can't I get notifications on my App?

A: Please confirm the App is still running on your mobile device, (Background App refresh should be on). Ensure that notification settings are on in the App screen under settings. Also that Motion and Sound settings are activated on the device settings.

9

## Functions

### Video flip

Flip your video stream vertically anytime for maximum flexibility.

### Full – duplex audio

See and speak with visitors through 2 way audio through the App screen.

### Motion and sound detection

Motion and sound sensors will notify you when movement or sound is detected.

### Record

Record every moment using high capacity SD card storage or cloud storage.

### Day & Night

Powerful night vision means no interruptions, even in complete darkness.



Daytime

Night

10

[Link2Home.co.uk](https://Link2Home.co.uk)

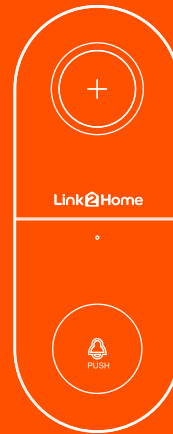


Imported by Link2Home UK,  
West Sussex, RH194PQ

# Link2Home

## QUICK GUIDE

Smart Wired Doorbell  
with Adapter - Grey  
Weather Proof IP54

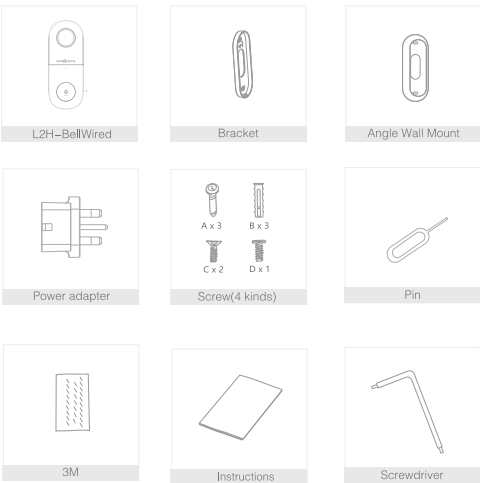


L2H-BellWired

Clean Design • Performance • Affordability

## What's in the box

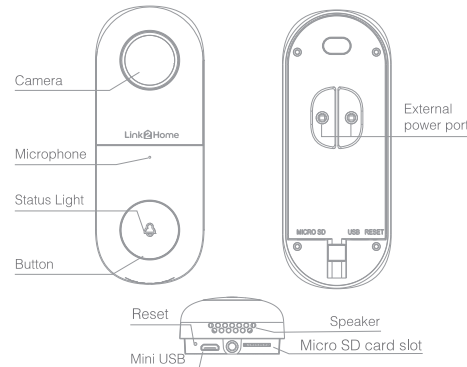
Please consult this checklist for all parts.



### Warning

1. Do not install the device close to a heat source such as: an air conditioner unit, air vent or boiler exhaust system as this could cause interference.
2. Do not install the device behind obstacles such as windows as this may cause interference.
3. Try to avoid installing your device in direct sunlight, or with other lights directed at the device as this may cause interference.

1



## Description

Power Port AC 12V –24V / DC12V

Doorbell button Press the button to activate the doorbell

- Status light
- Solid red light: the camera network is abnormal
  - Blinking red light: awaiting WiFi connection, or under connection (faster blinking)
  - Solid blue light: camera running correctly

Microphone Captures sound for your video and sound alerts

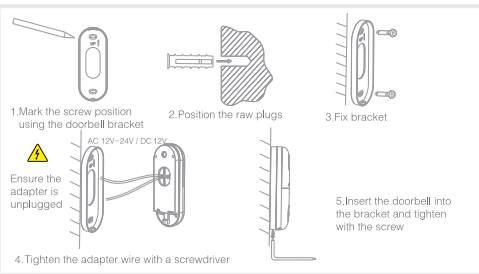
Micro SD card slot Supports local Micro SD Card storage (Max, 128G)

Reset Press and hold the reset button 5 seconds with pin to restore to factory defaults.

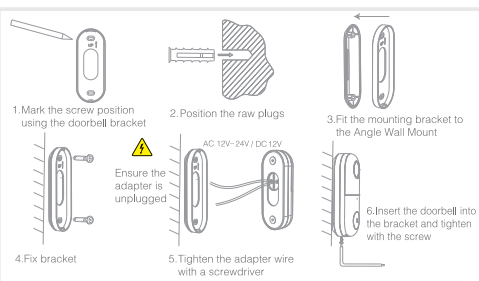
2

## Install

### Mode 1 Doorbell General Installation



### Mode 2 Angle Wall Mount + bracket + doorbell installation



3

## Connect

### Download

Link2Home Pro is available for both iOS and Android OS. Search the name 'Link2Home Pro' in the App Store or Android Market, or scan the QR code below to download the App.

### Support



### Set up router

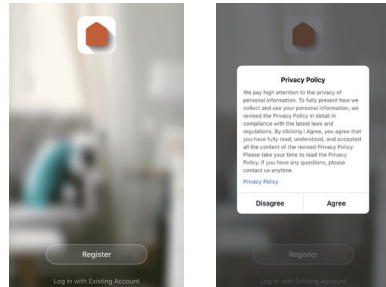
This device supports 2.4GHz frequency's only. It does not support 5GHz. Most household routers are dual band and so you should not need to change your routers settings. If however you do not have a dual band router please select an appropriate 2.4GHz network before WiFi configuration. When you set up your device ensure your mobile device, router and Link2Home device are as close as possible. You can move the device after set up.



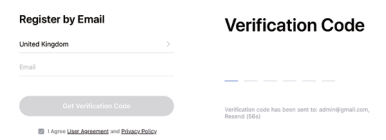
4

### Registration process

Step 1 Open the Link2Home Pro App, click "Register", read the "Privacy Policy" and click "Agree".



Step 2 Input a valid email address and click continue. Then enter the verification code from your email back into the App. (check you junk folder).



5

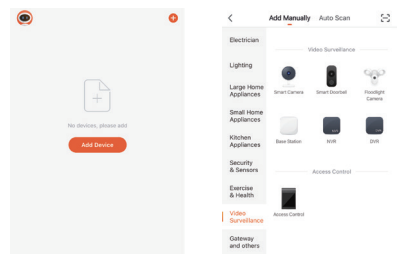
## Add a device Manually

### Getting started

1. Please follow the instructions and make sure the passwords are input correctly.
2. One device can only be added with one App account, if the device has been added with another account already, then it can't be added to any other account again. Devices can be shared with other users in the Home Management settings.
- 3.If the device has been added to another account it will need to be removed first. After the device has been removed it will reset automatically and the status light will change from solid blue to flashing red.

### Process

Step 1 Open the Link2Home Pro App, click "+" (in the upper right hand corner of the screen) or 'Add Device'. Then select 'Add Manually'.



Step 2 Select "Video Surveillance". Power the device on and make sure the indicator is flashing quickly or a prompt tone is heard.If you do not hear a prompt or see a flashing red light press and hold the reset button for 5 seconds.

6